

**13,600 kg Max. Capacity**  
**Under 2.41 m Wide**

- Rated Capacity Limiter ... Standard
- Capacity on Outriggers ... 13,600 kg
- Pick and Carry Capacity ... up to 7,430 kg
- Height ... 2.41 m
- Width ... 7' 10-1/2"
- Boom Rotation ... 360 Degree Continuous
- Sheave Height ... up to 22.5 m
- Horizontal Reach ... up to 20.12
- 4-Wheel Steer ... Standard
- 4-Wheel Drive ... Optional
- Powershift Transmission ... Standard
- Fully Hydraulic Controls for Smooth Precise Operations
- Independent Outrigger Controls
- Dual Fuel Standard, Diesel Optional

**BRODERSON**  
Manufacturing Corp.

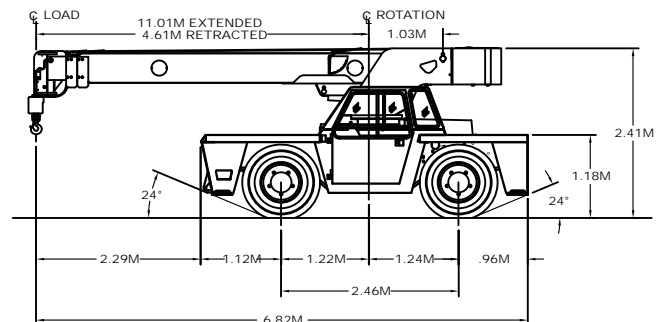
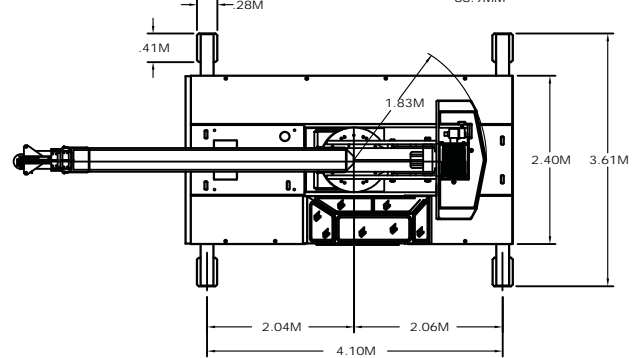
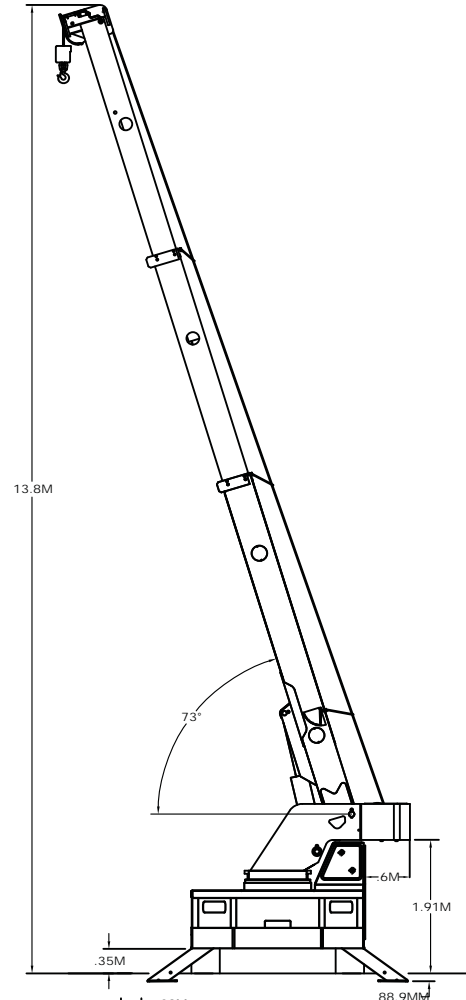
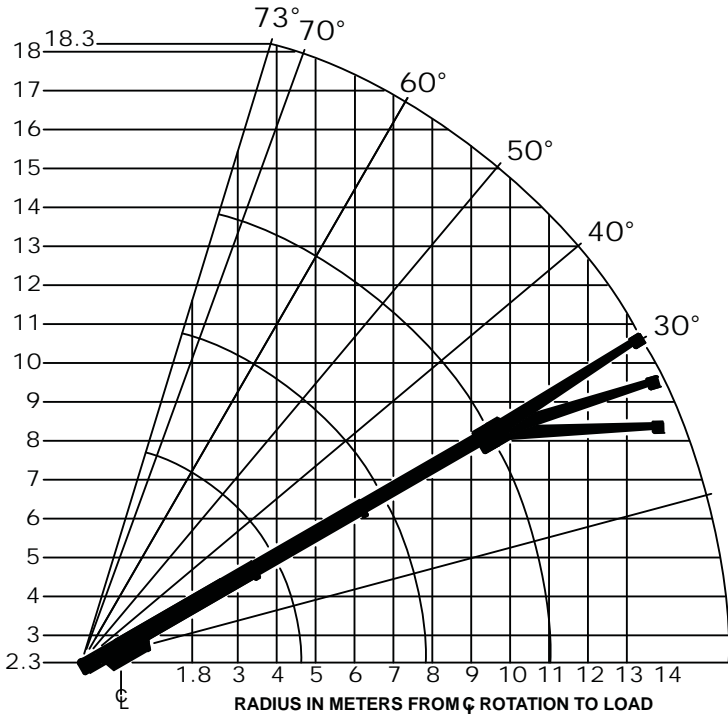
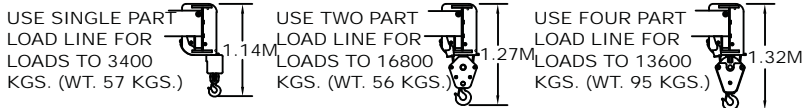


# IC-200-2G

CAPACITIES APPLY TO OPERATION ON FIRM LEVEL SURFACE							
LOAD RADIUS METERS	MAIN BOOM OR EXTENSION CAPACITIES IN KILOGRAMS						
	360° ROTATION		OVER FRONT				
	ON RUBBER	ON OUTRIGGERS	ON RUBBER	ON OUTRIGGERS			
1.8	7350	13600	7710	13600			
2.0	6940	12700	7240	12700			
2.5	5870	10700	6150	10700			
3.0	4900	9120	5290	9120			
3.5	3850	7690	4560	7690			
4.0	3040	6620	3920	6620			
4.5	2540	5700	3300	5700			
5.0	2130	4970	2720	4970			
6.0	1540	4080	2000	4080			
7.0	1170	3250	1490	3330			
8.0	910	2570	1160	2780			
9.0	750	2160	970	2450			
10.0	610	1820	800	2150			
11.0	520	1530	680	1900			
12.0	420	1410	560	1670			
13.0	330	1250	460	1470			
14.0	250	1090	390	1320			
15.0	170	940	310	1170			
15.5	120	870	270	1090			
BOOM EXTENSION	15-FOOT BOOM EXTENSION - STRAIGHT OR OFFSET						
ANGLE	MAIN BOOM ANGLE						
	0°	15°	30°	40°	50°	60°	70°
0°	--	1400	1560	1770	2110	2720	3400
15°	--	1360	1400	1500	1650	1930	2360
30°	--	--	1360	1380	1450	1560	1770

CAUTION BOOM EXTENSION LOADS MUST NOT EXCEED MAIN BOOM CAPACITY.

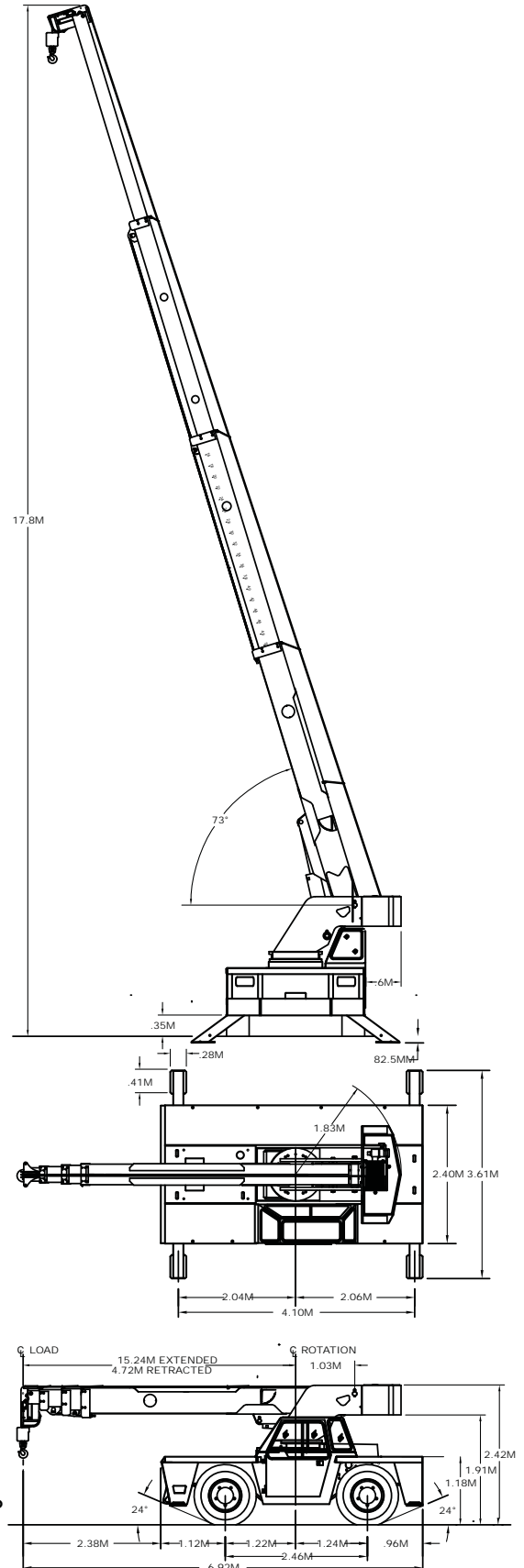
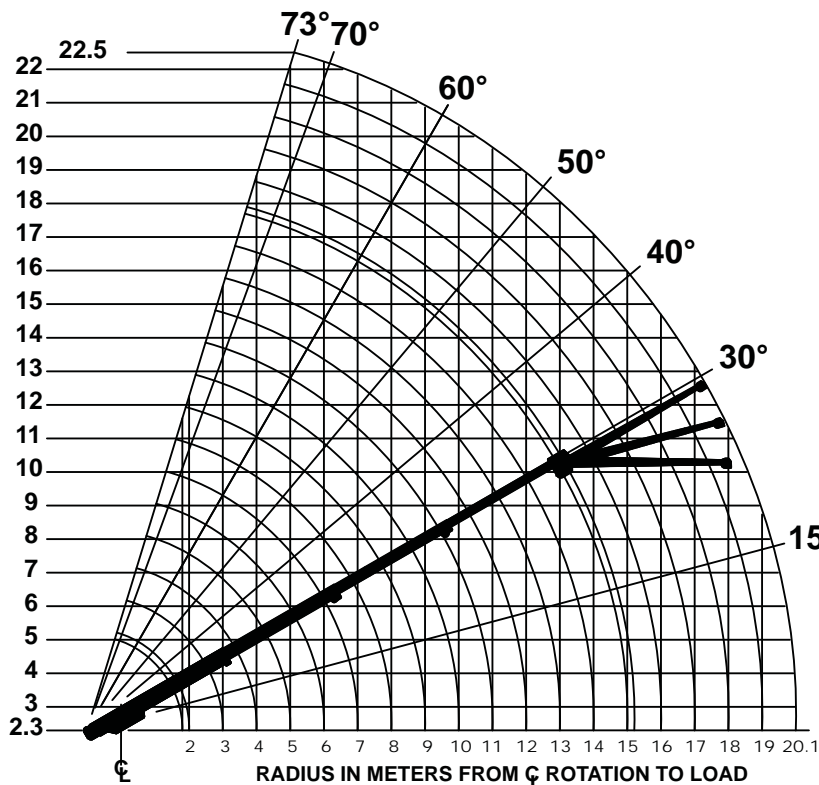
CAPACITIES ON OUTRIGGERS ARE 85% OF TIPPING LOADS. CAPACITIES ON RUBBER ARE 75% OF TIPPING LOADS. CAPACITIES BELOW BOLD LINE ARE LIMITED BY TIPPING. OTHER CAPACITIES ARE LIMITED BY STRUCTURAL OR HYDRAULIC CAPABILITY.



# IC-200-3G

CAPACITIES IN KILOGRAMS FOR OPERATION ON FIRM LEVEL SURFACE								
LOAD RADIUS METERS	MAIN BOOM ONLY				BOOM EXTENSION			
	ON RUBBER		ON OUTRIGGERS		ON RUBBER		ON OUTRIGGERS	
	360°	FRONT	360°	FRONT	360°	FRONT	360°	FRONT
1.8	7250	7430	13600	13600	---	---	---	---
2.0	6800	7000	12630	12630	---	---	---	---
2.5	5550	5780	9970	9970	---	---	---	---
3.0	4620	4840	8520	8520	3400	3400	3400	3400
3.5	3850	4150	7440	7440	3400	3400	3400	3400
4.0	3240	3560	6550	6550	3400	3400	3400	3400
4.5	2740	3090	5650	5650	3160	3400	3400	3400
5.0	2330	2730	4780	4780	2680	3300	3400	3400
5.5	2000	2440	4320	4320	2260	2910	3400	3400
6.0	1730	2180	3940	3940	1960	2535	3400	3400
7.0	1320	1790	3330	3330	1510	1970	2970	2970
8.0	1020	1420	2810	2840	1180	1570	2580	2580
9.0	800	1150	2260	2460	935	1270	2270	2270
10.0	625	915	1810	2150	745	1030	2020	2020
11.0	490	700	1500	1890	590	850	1760	1810
12.0	370	530	1250	1670	470	705	1510	1635
13.0	270	400	1040	1480	360	575	1300	1475
14.5	105	275	815	1240	235	425	1030	1290
15.3	0	245	790	1140	185	350	890	1190
17.0	---	---	---	---	0	230	700	980
18.0	---	---	---	---	0	175	590	870
19.0	---	---	---	---	0	120	500	780
20.1	---	---	---	---	0	0	420	680
BOOM EXT. ANGLE	BOOM EXTENSION - STRAIGHT OR OFFSET							
	MAIN BOOM ANGLE							
	0°	15°	30°	40°	50°	60°	70°	
0°	1360	1400	1565	1770	2110	2720	3400	
15°	---	1360	1360	1360	1360	1680	2270	
30°	---	---	1135	1135	1180	1410	1720	

CAUTION: BOOM EXTENSION LOADS MUST NOT EXCEED MAIN BOOM CAPACITY. CAPACITIES ON OUTRIGGERS ARE 85% OF TIPPING LOADS. CAPACITIES ON RUBBER ARE 75% OF TIPPING LOADS. CAPACITIES BELOW BOLD LINE ARE LIMITED BY TIPPING. OTHER CAPACITIES ARE LIMITED BY STRUCTURAL OR HYDRAULIC CAPABILITY.



# IC-200-G

## Specifications

### GENERAL:

<b>Weight:</b>	<b>IC-200-2G</b> 12,800 kg	<b>IC-200-3G</b> 13,900 kg
<b>Boom Movement:</b>		
<b>Rotation</b>	Continuous	Continuous
<b>Elevation</b>	0° to 73°	0° to 73°
<b>Extension</b>	6.4 m	10.52 m
<b>Boom Speeds:</b>		
<b>Rotation</b>	1.9 RPM	1.8 RPM
<b>Elevation</b>	20 sec.	20 sec.
<b>Extension</b>	36 sec.	55 sec.
<b>Gradeability:</b>	54% (28 Degrees)	
<b>Turning Radius:</b>	4.39 m	

### ENGINE:

	<b>Standard</b>	<b>Optional</b>
<b>Make</b>	GM*	Cummins**
<b>Model</b>	4.3L V-6	QSB3.3
<b>Type</b>	Gasoline	Turbo-Diesel
<b>No. Cyl.</b>	6	4
<b>Displacement</b>	4.3 L	3.3 L
<b>HP @ Gov. Speed</b>	69.4 kw	74 kw
<b>Fuel Tank Capacity</b>	114 L	

\*Electronic Fuel Injection with Dual Fuel & Engine Management System, US EPA Tier 2

\*\*Charge Air Cooled & Grid Heater US EPA Tier 3 Emissions Certified

### TRANSMISSION:

Powershift transmission with 4-speeds forward and reverse. Provides powershifts at any engine speed in any gear. All shifting is done with a single lever electrical control mounted on the steering column. Equipped with torque converter and transmission oil cooler. Torque converter has stall ratio of 2.2:1.

<b>Gear Ratio:</b>			
First	5.72:1	Second	3.23:1
Third	1.77:1	Fourth	1.00:1

### AXLES:

#### Front Axle:

Planetary drive/steer front axle with 15.78 to 1.0 ratio. Differential equipped with "limited slip" feature. Front axle mounted rigidly to frame.

<b>Gear</b>	<b>Travel Speed</b>	<b>Drawbar Pull*</b>
First	4.83 km/h	7,711 kg*
Second	8.05 km/h	4,037 kg*
Third	16.10 km/h	2,313 kg*
Fourth	28.97 km/h	1,225 kg*

\*Drawbar pull is calculated for GM 4.3 L engine.

#### Rear Axle:

##### Standard (2-Wheel Drive):

Steering axle with 1-1/2 degree oscillation in either direction.

##### Optional (4-Wheel Drive):

Planetary drive/steer axle with 24.98 to 1.0 ratio. Differential is not "limited slip" in rear axle. 1-1/2 degree oscillation in either direction. Axle ratio compatible with 4-wheel drive transmission output for front axle match. Transmission equipped with electrohydraulic control for shifting between 2-wheel drive and 4-wheel drive.

### STEERING:

Full hydraulic steering unit with two 7.62 cm cylinders attached to each axle. Allows limited steering when engine is not running. A switch on the control panel is used to select rear-wheel steering, four-wheel steering or crab steering. Electronic sensors and control box automatically align the steering when a new mode is selected.

### BRAKES:

**Service:** Split-system, 4-wheel hydraulic-boosted multiple-plate wet disc brakes.

**Parking:** Hand lever actuated disc-type parking brake on transmission.

**TIRES:** 15x22.5, 20-ply rating.

### OPERATOR COMPARTMENT:

Provides one-position access to all chassis and crane functions. Includes adjustable operator's seat, retracting seat belts, fire extinguisher and bubble level.

### CHASSIS:

#### Cargo Deck:

6.7 square meters of deck area. 7,711 kg capacity on deck when load is centered over or between axles. Steps located on front corners.

#### Lifting Rings:

Lifting rings at each corner of load deck so sling can be attached for lifting crane.

#### Outriggers:

Four hydraulic outriggers of box beam construction with direct-connected holding valves. Independent controls for each outrigger. Outrigger pad dimension: 28 cm x 41 cm.

#### Accessory Storage Box:

Storage box is 35.6 cm deep x 26.7 cm wide x 92.7 cm long, located in front cargo deck.

### ELECTRICAL:

#### 12 Volt System

##### Lighting Package:

One pair headlights with high and low beams, tail, brake and turn signal lights and back-up lights in rear, front turn signals and emergency flasher switch at operator's station.

##### Instrument Package:

Fuel gauge and hourmeter records hours only during actual engine operations. Also includes warning lights for low oil and transmission pressure, check engine, high coolant and transmission temperature, turn signals, high beams, hazard lights, parking brake and four-wheel drive.

##### Back-Up Alarm:

Provides pulsating sound when transmission is in reverse.

##### Outrigger Alarm System:

Two-tone alarm is activated when "outrigger down" controls are operated.

### HYDRAULIC SYSTEM:

Tandem pump, direct-driven by engine crankshaft, rated at 110 and 129 lpm at rated RPM. Hydraulic oil tank capacity of 204 L.

### BOOM ASSEMBLY:

Three or four section boom assembly equipped with bearing pads, double-acting hydraulic cylinders with direct-connected holding valves and boom angle indicator on each side of boom.

### Boom Rotation:

Heavy-duty ball bearing rotation gear with external teeth. Rotation is powered by hydraulic motor and worm gear drive.

### Boom Hoist:

Turret mounted planetary gear hoist hydraulically powered with a baredrum line pull of 4,535 kg at a line speed of 30 mpm. Includes downhaul weight, swivel hook and sheave block for 4-part line & 73 m (2G) and 89 m (3G) of 1/2" hoist rope.

### Anti-Two-Block Device:

Prevents damage to hoist rope and/or crane components from pulling load hook against tip.

### Sheave Block, Four Part Line:

Double sheave block for 4-part line requirements.

### Rated Capacity Limiter:

Warns operator of impending overload with audible and visual signals. Prevents overloads by stopping boom functions that cause overloads.

# IC-200-G

## Options

Listed below are brief descriptions of options available for this product.  
Consult the IC-200-G Engineering Spec for additional information.

### MODEL:

- IC-200-2G Industrial Crane** with  
4.61 m -11.01 m Boom
- IC-200-3G Industrial Crane** with  
4.72 m -15.24 m Boom

### ENGINE OPTIONS:

#### Diesel Engine

Cummins QSB3.3 Turbocharged

#### Spark Arrester Muffler

Installed in addition to standard muffler.

#### Catalytic Converter

Reduces engine emissions.

#### Engine Heater

Engine coolant heater installed to circulate warm water through engine, plugs into 120 volt AC.

### AXLE & STEERING OPTIONS:

- 4-Wheel Steer & 2-Wheel Drive**
- 4-Wheel Steer & 4-Wheel Drive**

### TIRE OPTIONS:

- Non-Marking Tires**
- Foam Filling of Tires**
- Spare Tire & Wheel**

### CHASSIS OPTIONS:

#### Auxiliary Winch

Mounted behind front bumper, hydraulically driven with control in operator's console.

#### Pintle Hook:

- Pintle Hook, Rear**
- Pintle Hook, Front**

#### Headlight and Taillight Grilles

Welded steel protective grilles for headlights and taillights.

#### Rearview Mirrors

One mounted on right-hand deck stake and one mounted on lefthand deck stake.

### OPERATOR COMPARTMENT OPTIONS:

#### Operator Guard

Tubular steel weldment with heavy expanded steel mesh top section.

#### Operator Guard Cover

Clear vinyl cover over Operator Guard, for inclement weather operations.

#### All Weather Cab

Rigid-mounted canopy section and removable hinged door. Includes heater, electric wind-shield wiper, one sliding glass window in the door and one in the right side of canopy. Defroster fan and dome light included.

#### Cab Heater Only

Heater with two-speed fan for units without All Weather Cab.

#### Windshield Washer

Includes reservoir, pump & nozzle.

#### Floor Mat

Vinyl mat with foam backing.

#### Operator Suspension Seat

Provides additional comfort for operator.

#### Noise Reduction Kit

Includes floor mat, control valve cover and side panels of foam backed vinyl for noise reduction.

#### Air Conditioning

Air Conditioner w/134 coolant.

### ELECTRICAL OPTIONS:

#### Strobe Lights

Yellow strobe light mounted on each side of turret weight box. One work light mounted to boom to light boom tip and one work light mounted to turret to light ground under boom tip.

#### Boom Work Lights

One work light mounted to boom to light boom tip and one work light mounted to turret to light ground under boom tip.

#### Work Lights - Rear

Two work lights recessed in rear bumper.

### BOOM ATTACHMENTS:

#### Boom Extension, 4.6 m (2G Only)

Swing away and boom stowable.

#### Boom Extension, 4.6 m, Offsettable (2G Only)

Same as above except the boom extension is offsettable to 3 different positions; 0 degree (inline), 15 degree and 30 degree offset.

#### Boom Extension, 4.9 m, Offsettable (3G Only)

Same as above except the boom extension is 4.9 m.

#### Sheave Block - Two-Part Line

#### Searcher Hook:

Nose Mount

Should you require an option or special equipment not listed please consult your dealer salesperson or BMC®.

**BRODERSON**

Manufacturing Corp.

14741 West 106th Street

Lenexa, KS 66215 USA

Tel (913) 888-0606

Fax (913) 888-8431

www.bmccranes.com

Dimensions and values shown are

for reference purposes only.

Specifications subject to change.





**IC-20**



**IC-25**



**IC-35**



**IC-40**



**IC-80**



**IC-250**