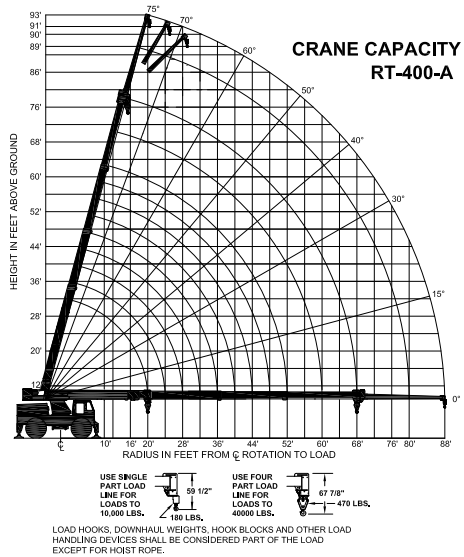
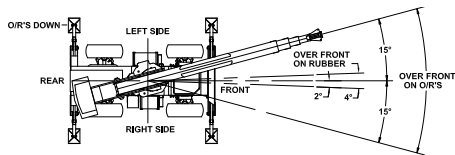


Crane Capacity Chart: Imperial



Load hooks, downhaul weights, hook blocks and other load handling devices except hoist rope shall be considered part of the load.



The load hoist line on this unit must be 5/8" dia. 425 Foot long compact 35x7 class grade 2160 wire rope (or equivalent) with a minimum breaking strength of 35,000 lbs.

Approved tires: 17.5-2520 Pr-100 psi

Torque wheel nuts to 475 ft. Lbs. (These conditions must be maintained to handle rated loads on this crane.)

CAPACITIES APPLY TO OPERATION ON FIRM LEVEL SURFACE									
LOAD RADIUS FEET	MAIN BOOM OR EXTENSION CAPACITIES IN POUNDS								
	360° ROTATION		OVER FRONT						
	ON RUBBER	ON OUTRIGGERS	ON RUBBER	ON OUTRIGGERS					
10	18300	40000	26300	40000					
12	13900	34100	22000	34100					
14	10900	29200	18000	29200					
16	8600	25500	14800	25500					
18	7300	23200	12400	22700					
20	6000	22000	10000	22000					
22	5000	19000	8300	20000					
24	4200	17800	7000	18300					
26	3600	16100	6100	16900					
28	3000	13300	5200	15700					
30	2500	12000	4600	14600					
32	2200	10700	4000	13700					
34	1800	9700	3500	12900					
36	1500	8900	3100	11900					
38	1300	8000	2700	10900					
40	1000	7300	2400	9900					
42	800	6700	2000	9200					
46	---	5600	1600	8100					
50	---	4700	1200	7000					
54	---	4000	800	6100					
58	---	3400	500	5300					
62	---	2900	---	4600					
66	---	2400	---	4000					
68	---	2300	---	3600					
72	---	2500	---	2800					
76	---	2000	---	2800					
80	---	1600	---	2800					
84	---	1300	---	2800					
88	---	1100	---	2000					
BOOM EXTENSION	20-FOOT BOOM EXTENSION CAPACITIES								
	MAIN BOOM ANGLE								
	ANGLE	0°	15°	30°	40°	50°	60°	70°	75°
	0°	2300	2400	2700	3100	3700	4800	6200	7000
15°	---	2300	2400	2600	2900	3400	4100	4800	
30°	---	---	2300	2400	2500	2700	3100	3400	

DO NOT POSITION BOOM AT LOAD RADII WHERE NO LOAD CAPACITIES ARE SHOWN.

EXCEEDING CAPACITY RATINGS OR APPLYING SIDE LOADS TO THE BOOM OR BOOM EXTENSION IS MISUSE, IS HAZARDOUS, AND VOIDS WARRANTY.

CAUTION: BOOM EXTENSION LOADS MUST NOT EXCEED MAIN BOOM CAPACITY. DO NOT PICK AND CARRY WITH LOADS ON BOOM EXTENSION. DO NOT LIFT LOADS ON BOOM EXTENSION WHEN ON RUBBER.

RT-400-A Rough Terrain Crane

LOAD RADIUS IS THE HORIZONTAL DISTANCE FROM THE CENTER OF ROTATION OF THE UNLOADED CRANE TO THE VERTICAL LOAD LINE WITH THE LOAD APPLIED.

CAPACITIES ON OUTRIGGERS ARE 85% OF TIPPING LOADS. CAPACITIES ON RUBBER ARE 75% OF TIPPING LOADS. CAPACITIES BELOW BOLD LINES ARE LIMITED BY TIPPING. OTHER CAPACITIES ARE LIMITED BY STRUCTURAL OR HYDRAULIC CAPACITY.

PICK AND CARRY WITH THE SHORTEST PRACTICAL BOOM, CENTERED OVER THE FRONT. OPERATE WITH BOOM AS LOW AS POSSIBLE, WITH THE LOAD CLOSE TO THE GROUND. PICK AND CARRY CAPACITIES ARE FOR SMOOTH, LEVEL PAVED SURFACE. SPEED MUST BE LESS THAN 3 MPH.

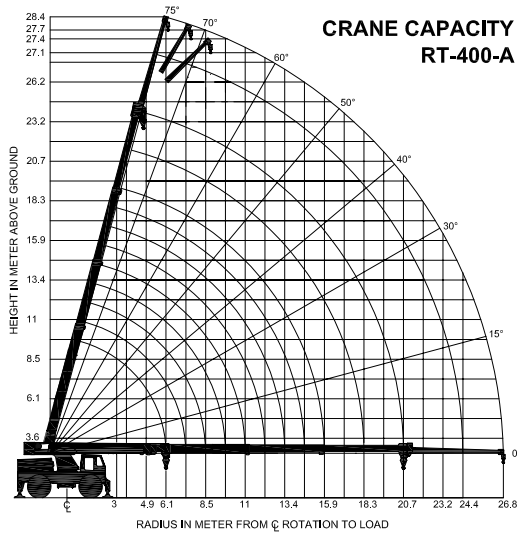
THE BOOMS ON THIS UNIT ARE ALL STEEL AND HAVE NO LINE VOLTAGE RATING - NO ELECTRICAL INSULATION VALUE.

MAXIMUM HYDRAULIC PRESSURE: 3000 PSI

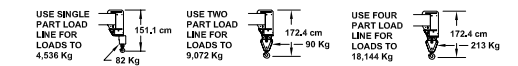
BOOM EXTENSION DEDUCT: 500 LBS WHEN STOWED ON BASE BOOM

ENSURE ANTI-TWO-BLOCK SWITCH IS FUNCTIONAL AFTER DEPLOYING OR STOWING BOOM EXTENSION.

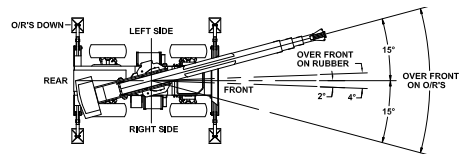
Crane Capacity Chart: Metric



**CRANE CAPACITY
RT-400-A**



Load hooks, downhaul weights, hook blocks and other load handling devices except hoist rope shall be considered part of the load.



The load hoist line on this unit must be 5/8" dia. 425 Foot long compact 35x7 class grade 2160 wire rope (or equivalent) with a minimum breaking strength of 15,875 kgs.

Approved tires: 17.5-25 20 PR - 6.9 bar

Torque wheel nuts to 644 Nm. (These conditions must be maintained to handle rated loads on this crane.)

CAPACITIES APPLY TO OPERATION ON FIRM LEVEL SURFACE								
LOAD RADIUS (M)	MAIN BOOM OR EXTENSION CAPACITIES IN POUNDS							
	360° ROTATION		OVER FRONT					
	ON RUBBER	ON OUTRIGGERS	ON RUBBER	ON OUTRIGGERS				
3	8300	18100	11900	18100				
3.6	6300	15450	9950	15450				
4.2	4900	13200	8150	13200				
4.8	3900	11550	6700	11550				
5.4	3300	10500	5600	10300				
6	2700	9950	4500	9950				
6.7	2250	8600	3750	9050				
7.3	1900	8050	3150	8300				
7.9	1600	7300	2750	7650				
8.5	1350	6000	2350	7100				
9.1	1100	5400	2050	6600				
9.7	1000	4850	1800	6200				
10.3	800	4400	1550	5850				
10.9	650	4000	1400	5400				
11.5	550	3600	1200	4900				
12.1	450	3300	1050	4500				
12.8	350	3000	900	4150				
14	---	2500	700	3650				
15.2	---	2100	500	3150				
16.4	---	1800	350	2750				
17.6	---	1500	200	2400				
18.8	---	1300	---	2050				
20.1	---	1050	---	1800				
20.7	---	1000	---	1600				
21.9	---	1100	---	1250				
23.1	---	900	---	1250				
24.3	---	700	---	1250				
25.6	---	550	---	1250				
26.8	---	500	---	900				
20-FOOT BOOM EXTENSION CAPACITIES								
MAIN BOOM ANGLE								
ANGLE	0°	15°	30°	40°	50°	60°	70°	75°
0°	1200	1200	1300	1500	1800	2300	2800	3100
15°	---	1100	1200	1200	1300	1500	1900	2100
30°	---	---	1000	1100	1100	1200	1400	1500

DO NOT POSITION BOOM AT LOAD RADII WHERE NO LOAD CAPACITIES ARE SHOWN.

EXCEEDING CAPACITY RATINGS OR APPLYING SIDE LOADS TO THE BOOM OR BOOM EXTENSION IS MISUSE, IS HAZARDOUS, AND VOIDS WARRANTY.

CAUTION: BOOM EXTENSION LOADS MUST NOT EXCEED MAIN BOOM CAPACITY. DO NOT PICK AND CARRY WITH LOADS ON BOOM EXTENSION.

RT-400-A Rough Terrain Crane

LOAD RADIUS IS THE HORIZONTAL DISTANCE FROM THE CENTER OF ROTATION OF THE UNLOADED CRANE TO THE VERTICAL LOAD LINE WITH THE LOAD APPLIED.

CAPACITIES ON OUTRIGGERS ARE 85% OF TIPPING LOADS. CAPACITIES ON RUBBER ARE 75% OF TIPPING LOADS. CAPACITIES BELOW BOLD LINES ARE LIMITED BY TIPPING. OTHER CAPACITIES ARE LIMITED BY STRUCTURAL OR HYDRAULIC CAPACITY.

PICK AND CARRY WITH THE SHORTEST PRACTICAL BOOM, CENTERED OVER THE FRONT. OPERATE WITH BOOM AS LOW AS POSSIBLE, WITH THE LOAD CLOSE TO THE GROUND. PICK AND CARRY CAPACITIES ARE FOR SMOOTH, LEVEL PAVED SURFACE. SPEED MUST BE LESS THAN 4.8 KPH.

THE BOOMS ON THIS UNIT ARE ALL STEEL AND HAVE NO LINE VOLTAGE RATING - NO ELECTRICAL INSULATION VALUE.

MAXIMUM HYDRAULIC PRESSURE:
206.8 bar

BOOM EXTENSION DEDUCT: 227 Kg
WHEN STOWED ON BASE BOOM

ENSURE ANTI-TWO-BLOCK SWITCH IS FUNCTIONAL AFTER DEPLOYING OR STOWING BOOM EXTENSION.