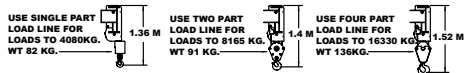
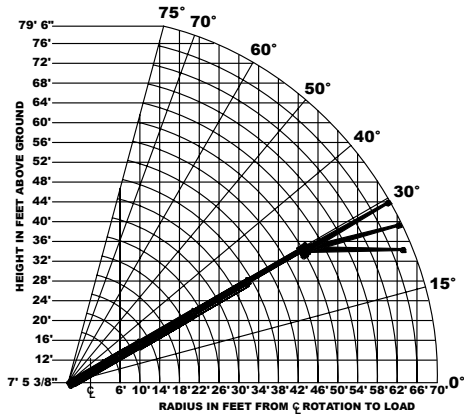
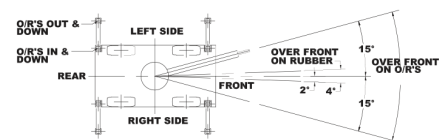


Load Chart US Standard



Load hooks, downhaul weights, hook blocks and other load handling devices except hoist rope shall be considered part of the load.



The load hoist line on this unit must be 9/16" dia. 6x36-EIP-RR-L-IWRC wire rope (or equivalent) with a minimum breaking strength of 31,500 lbs..

Approved tires: OTR 385/65D22.5, 16 PLY - 120 PSI

Torque wheel nuts to 500 ft. lbs (these conditions must be maintained to handle rated loads on this crane.)

CAPACITIES ARE IN POUNDS AND APPLY TO OPERATION ON FIRM LEVEL SURFACE								
LOAD RADIUS FEET	MAIN BOOM		MAIN BOOM OR BOOM EXTENSION					
	ON RUBBER 360° ROTATION	ON RUBBER OVER FRONT	O/R'S IN & DOWN 360° ROTATION	O/R'S IN & DOWN OVER FRONT	O/R'S OUT & DOWN 360° ROTATION			
6	16400	18500	30000	36000	36000			
8	13000	15000	25000	30400	30400			
10	10800	12350	20300	25000	25000			
12	9000	10450	15500	20800	20800			
14	7550	9000	11500	18700	18700			
16	6450	7800	9000	16700	16700			
18	5600	6850	7500	14900	14900			
20	4800	6100	6400	13500	13500			
22	4150	5400	5500	12100	12100			
24	3600	4650	4800	10900	10900			
26	3100	4000	4100	9850	9850			
28	2700	3500	3500	8950	8950			
30	2350	3050	3050	8200	8200			
32	2000	2650	2650	7500	7500			
34	1750	2300	2300	7150	7000			
38	1300	1750	1750	5950	5650			
42	900	1400	1300	5000	4700			
46	600	1100	1000	4250	4000			
50	350	900	700	3650	3400			
54	---	---	---	---	3550			
58	---	---	---	---	3100			
62	---	---	---	---	2700			
66	---	---	---	---	2350			
70	---	---	---	---	2100			
BOOM EXT. OFFSET ANGLE	BOOM EXTENSION - STRAIGHT OR OFFSET							
	MAIN BOOM ANGLE							
	0°	15°	30°	40°	50°	60°	70°	75°
0°	2600	2750	3000	3400	4100	5100	6200	7000
15°	---	2500	2600	2700	2900	3300	4300	4800
30°	---	---	2300	2400	2500	2700	3200	3400

Deck load capacity 17,000 lbs, with empty boom retracted over front. Deck load must be centered behind front axle. Speed must be less than 2 MPH. Maximum travel 200 ft. in 30 minutes on smooth pavement.

Pick and Carry with the shortest practical boom, centered over the front. Operate with boom as low as possible with the load close to the ground. Pick and Carry capacities are for smooth, level paved surface.

The booms on this unit are all steel and have no line voltage rating - No electrical insulation value.

Boom extension deduct: 500 lbs. when stowed on base boom.

Ensure anti-two-block switch is functional after deploying or stowing boom extension.

LOAD RADIUS IS THE HORIZONTAL DISTANCE FROM THE CENTER OF ROTATION OF THE UNLOADED CRANE TO THE VERTICAL LOAD LINE WITH THE LOAD APPLIED.

EXCEEDING CAPACITY RATINGS OR APPLYING SIDE LOADS TO THE BOOM OR BOOM EXTENSION IS MISUSE, HAZARDOUS, AND VOIDS WARRANTY.

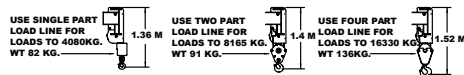
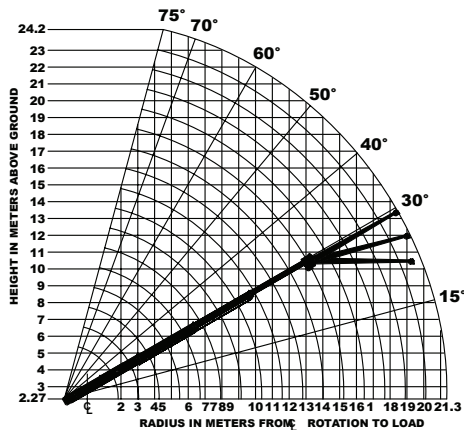
CAUTION: BOOM EXTENSION LOADS MUST NOT EXCEED MAIN BOOM CAPACITY. BOOM EXTENSION MAY ONLY CARRY LOADS WITH OUTRIGGERS DOWN.

CAPACITIES ON OUTRIGGERS ARE 85% OF TIPPING LOADS. CAPACITIES ON RUBBER ARE 75% OF TIPPING LOADS. CAPACITIES BELOW BOLD LINE ARE LIMITED BY TIPPING. OTHER CAPACITIES ARE LIMITED BY STRUCTURAL OR HYDRAULIC CAPABILITY.

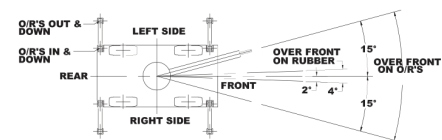
MAXIMUM HYDRAULIC PRESSURE: 3000 PSI

Load Chart Metric

IC-250-E Industrial Crane



Load hooks, downhaul weights, hook blocks and other load handling devices except hoist rope shall be considered part of the load.



The load hoist line on this unit must be 14.3mm dia. 6x36-EIP-RRL-IWRC wire rope (or equivalent) with a minimum breaking strength of 140 kN.

Approved tires: OTR 385/65D22.5, 16 PLY - 825 kPa
Torque wheel nuts to 680Nm (these conditions must be maintained to handle rated loads on this crane.)

CAPACITIES ARE IN KILOGRAMS AND APPLY TO OPERATION ON FIRM LEVEL SURFACE

LOAD RADIUS METERS	MAIN BOOM		MAIN BOOM OR BOOM EXTENSION					
	ON RUBBER 360° ROTATION	ON RUBBER OVER FRONT	O/R'S IN & DOWN 360° ROTATION	O/R'S IN & DOWN OVER FRONT	O/R'S OUT & DOWN 360° ROTATION			
1.8	7440	8400	13600	16330	16330			
2.0	6900	7880	12950	15600	15600			
2.5	5790	6680	11120	13540	13540			
3.0	4970	5680	9370	11530	11530			
3.5	4280	4930	7590	9770	9770			
4.0	3690	4350	5940	8890	8890			
4.5	3210	3860	4690	8130	8130			
5.0	2840	3440	3920	7400	7400			
6.0	2230	2820	2970	6220	6220			
7.0	1760	2280	2340	5210	5210			
8.0	1380	1780	1820	4410	4410			
9.0	1100	1430	1420	3800	3800			
10.0	860	1130	1130	3330	3300			
11.0	680	900	900	2960	2850			
12.0	520	730	710	2540	2400			
13.0	380	610	560	2210	2080			
14.0	270	500	450	1930	1820			
15.0	190	420	340	1700	1590			
15.2	160	410	310	1650	1540			
16.0	---	---	---	---	1610			
17.0	---	---	---	---	1520			
18.0	---	---	---	---	1360			
20.0	---	---	---	---	1080			
21.3	---	---	---	---	950			
BOOM EXT. OFFSET ANGLE	BOOM EXTENSION CAPACITIES- STRAIGHT OR OFFSET							
	MAIN BOOM ANGLE							
0°	15°	30°	40°	50°	60°	70°	75°	
0°	1180	1250	1360	1540	1860	2310	2810	3170
15°	---	1130	1180	1220	1310	1490	1950	2180
30°	---	---	1040	1090	1130	1220	1450	1540

Deck load capacity 7,700 kg, with empty boom retracted over front. Deck load must be centered behind front axle. Speed must be less than 3.2 km/h. Maximum travel 60m. in 30 minutes on smooth pavement.

Pick and Carry with the shortest practical boom, centered over the front. Operate with boom as low as possible with the load close to the ground. Pick and Carry capacities are for smooth, level paved surface.

The booms on this unit are all steel and have no line voltage rating - No electrical insulation value.

Boom extension deduct: 220 kg. when stowed on base boom.

Ensure anti-two-block switch is functional after deploying or stowing boom extension.

LOAD RADIUS IS THE HORIZONTAL DISTANCE FROM THE CENTER OF ROTATION OF THE UNLOADED CRANE TO THE VERTICAL LOAD LINE WITH THE LOAD APPLIED.

EXCEEDING CAPACITY RATINGS OR APPLYING SIDE LOADS TO THE BOOM OR BOOM EXTENSION IS MISUSE, HAZARDOUS, AND VOIDS WARRANTY.

CAUTION: BOOM EXTENSION LOADS MUST NOT EXCEED MAIN BOOM CAPACITY. BOOM EXTENSION MAY ONLY CARRY LOADS WITH OUTRIGGERS DOWN.

CAPACITIES ON OUTRIGGERS ARE 85% OF TIPPING LOADS. CAPACITIES ON RUBBER ARE 75% OF TIPPING LOADS. CAPACITIES BELOW BOLD LINE ARE LIMITED BY TIPPING. OTHER CAPACITIES ARE LIMITED BY STRUCTURAL OR HYDRAULIC CAPABILITY.

MAXIMUM HYDRAULIC PRESSURE: 207 BAR

www.BMCcranes.com
© 2018 Broderon Manufacturing Corp.