

IC-20-K **Industrial Crane**

The IC-20 may be the shortest Broderon crane on the market, but don't be fooled by its small size. Sharing many of the same features as the larger Broderon models, this crane's rugged construction makes it perfect for any close-quarters job.

Capacity

5,000 lbs. (2,270 kg)

Sheave Height

27' 9" (8.46 m)
(with boom extension)

Horizontal Reach

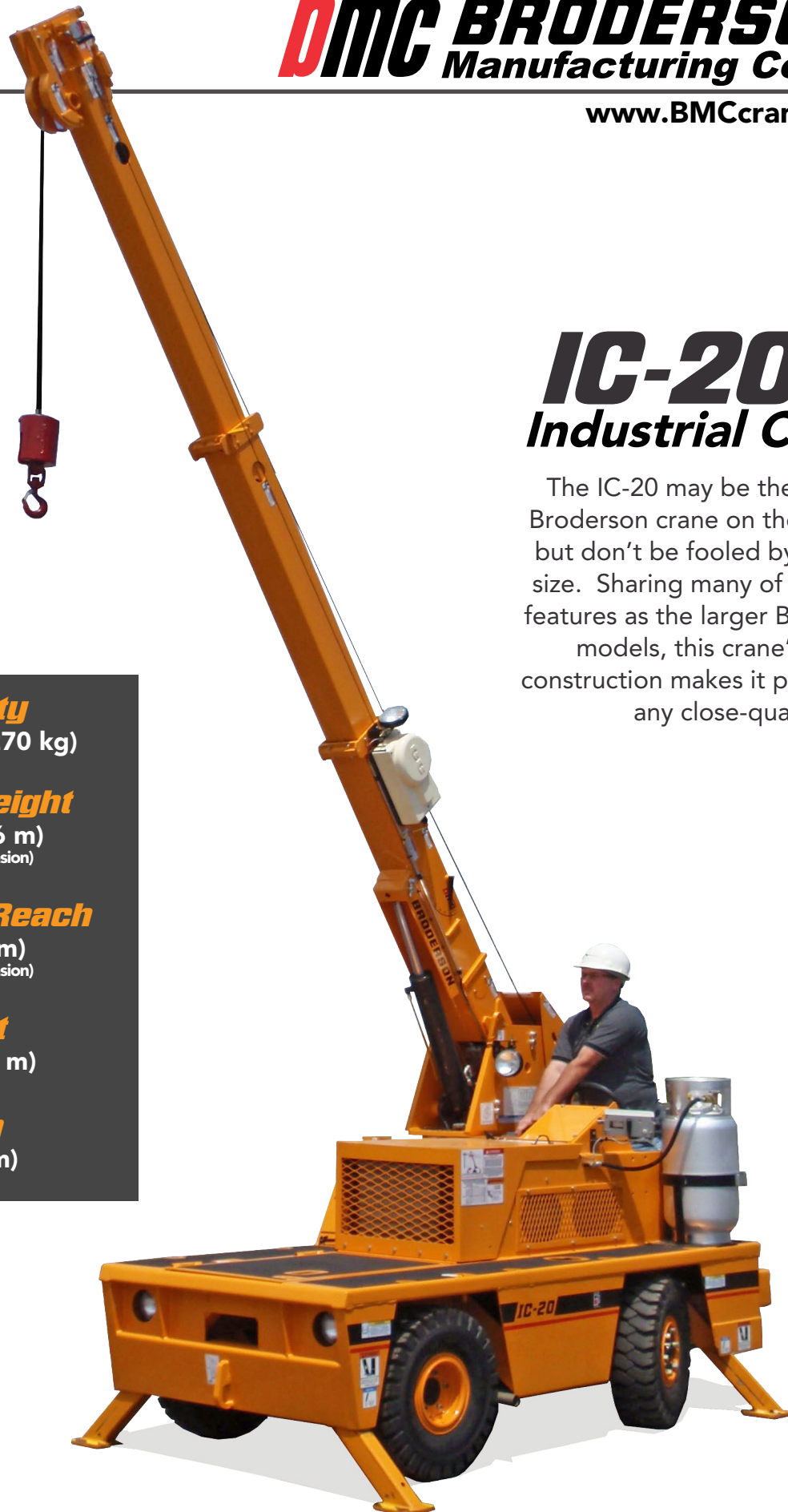
22' (4.78 m)
(with boom extension)

Height

5' 6" (1.68 m)

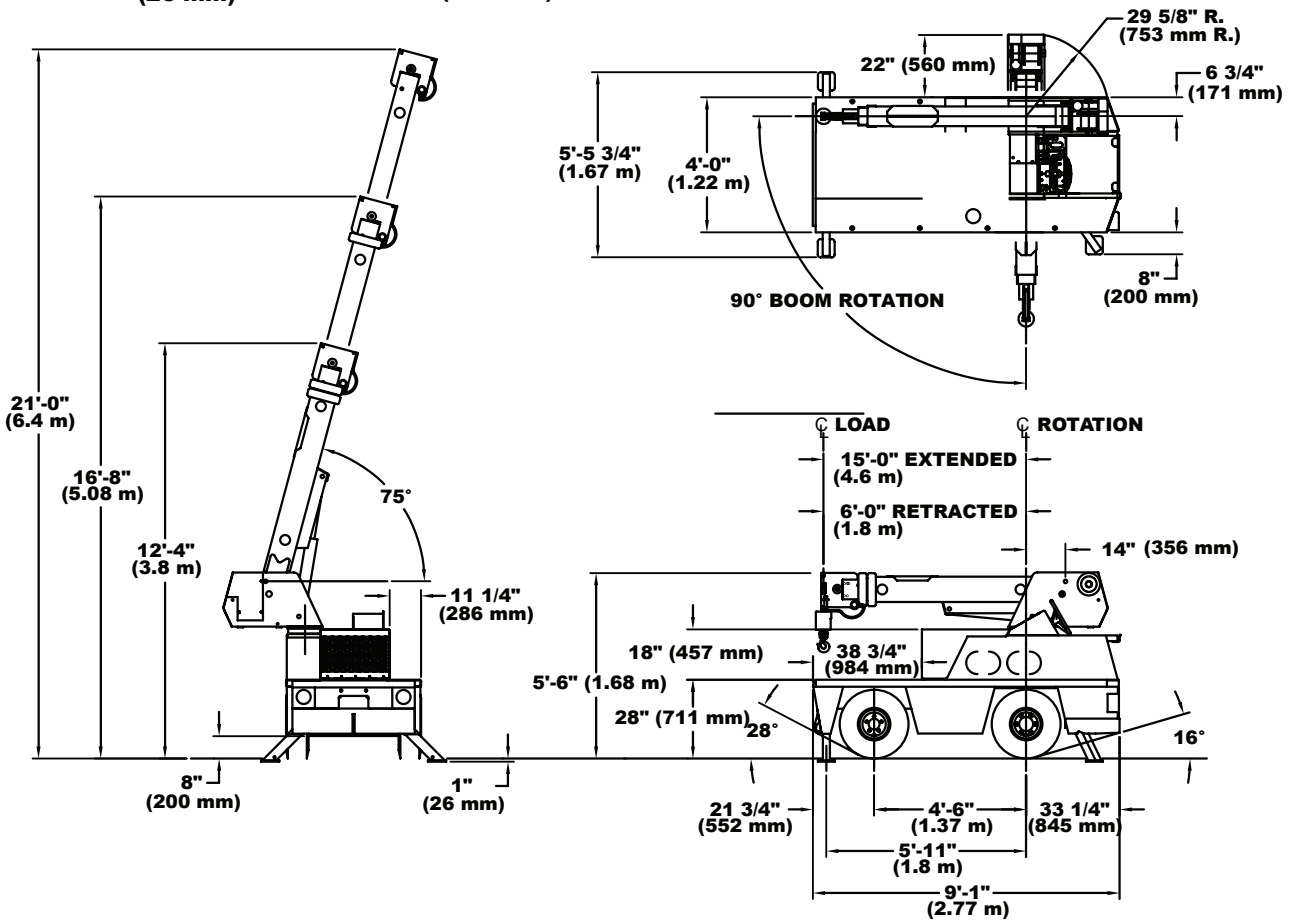
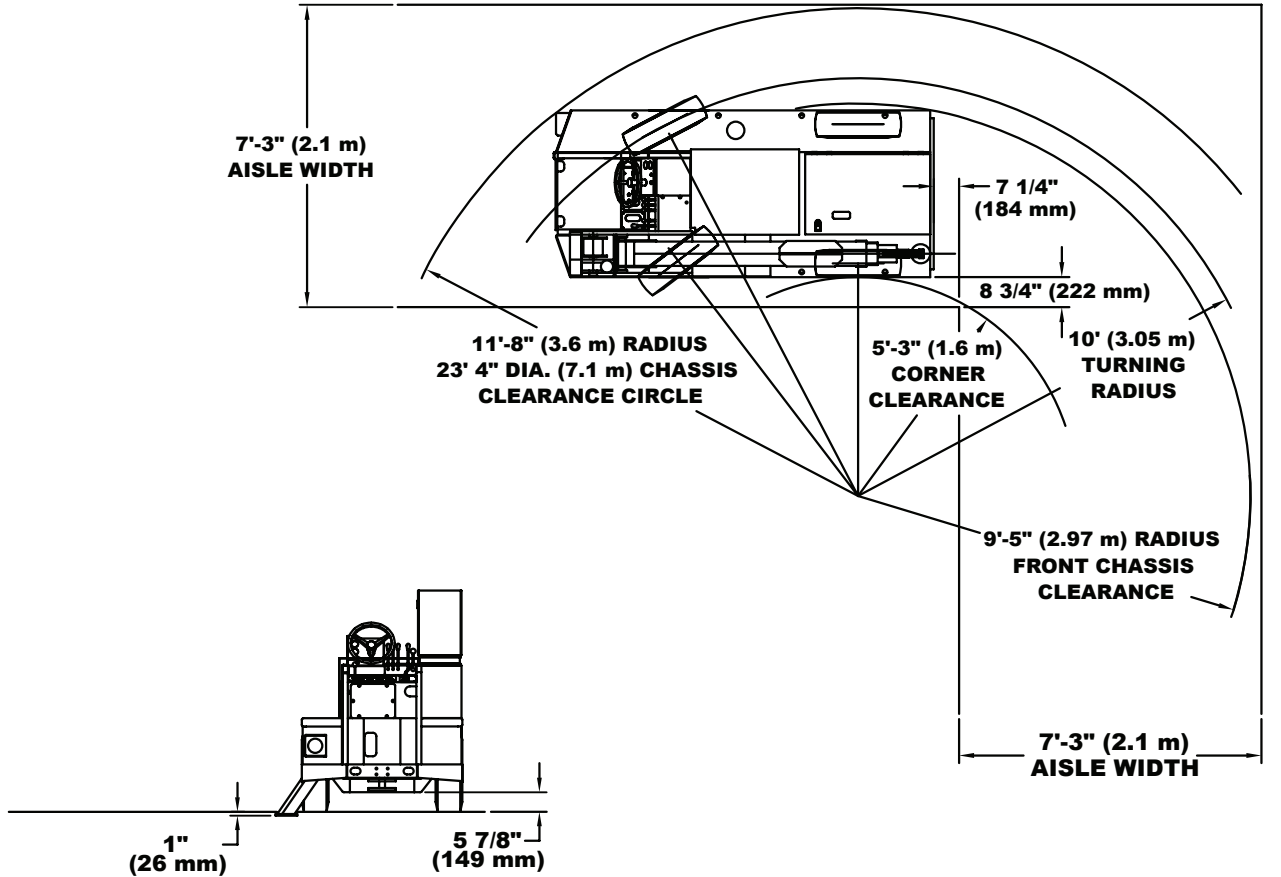
Width

4' (1.22 m)



IC-20-K

SPECIFICATIONS



CONSULT THE IC-20-K ENGINEERING SPEC FOR ADDITIONAL INFORMATION.

Main Features

CAPACITY ON OUTRIGGERS
5,000 lbs. (2,270 kg)

PICK AND CARRY CAPACITY
up to 2,500 lbs. (1,130 kg)

HEIGHT (w/o Operator Guard)
5' 6" (1.68 m)

HEIGHT (w/ Operator Guard)
7' 6" (2.3 m)

WIDTH
4' (1.22 m)

BOOM ROTATION
90°

SHEAVE HEIGHT
up to 27' 9" (8.46 m)

HORIZONTAL REACH
up to 22' (4.78 m)

TIGHT TURNING RADIUS

REAR WHEEL STEER
Standard

FRONT WHEEL DRIVE
Standard

**FULLY HYDRAULIC CONTROLS FOR
SMOOTH, PRECISE OPERATIONS**

DUAL FUEL OR DIESEL AVAILABLE

OPTIONS

TIRE

Solid Rubber Tires

For applications where hazardous ground conditions exist.

Solid Rubber Tires - Non Marking

Foam Filling of Tires

Spare Tire & Wheel - Pneumatic

Spare Tire & Wheel - Solid Rubber

Spare Tire & Wheel - Solid Rubber, Non Marking

Foam Filling of Spare Tires

CARGO DECK

Deck Mat

CHASSIS

Auxiliary Winch

Mounted behind the front bumper, hydraulically driven with control in operator's console provides bare drum line pull of 3,000 lbs (1,360 kg) @ 20 FPM (6m/min).

Pintle Hook - Rear

Holland "T-60-A" pintle hook mounted on rear of frame. 5-ton capacity.

Lifting Sling

Three leg lift sling to attach to Lifting Rings.

Rearview Mirrors

One mounted on right and left-hand deck stake. Pivots out of way for obstacles.

OPERATOR COMPARTMENT

Operator Guard

Tubular steel weldment with heavy expanded steel mesh top section. Overhead height with guard installed is 90 inches.

Floor Mat

Vinyl mat with foam backing.

ELECTRICAL

Strobe Lights

One yellow strobe light mounted on top of operator's guard for high visibility. When the operator's guard is not ordered the strobe light is mounted on left-hand frame rail.

Boom Work Lights

One work light mounted to boom to light boom tip and one work light mounted to turret to light ground under boom tip. Includes switch in operators compartment.

BOOM ATTACHMENTS:

Boom Swing Lock

Prevents boom from being swung in normal 90 degree arc.

7 Foot Pin-On Jib

Consists of jib with pair of tension bars, tip sheave, cable keeper and jib attaching pins. Tension bars provide two positions: In-line and 30 degree offset.

Rated Capacity Limiter

Operator's aid that warns operator of impending overload with audible and visual signals. Readouts for load, boom angle, and load radius.

Broderson Cranes are designed and built to ISO 9001:2015 certified standards and have a market leading reputation for quality and reliability. Broderson Cranes are engineered for operating efficiency and are easy to operate and maintain.

An extensive network of full-service dealers offer parts and service support by factory-trained technicians.

For additional options or special equipment not listed, please consult your dealer salesperson or contact Broderson Manufacturing Corp.

BRODERSON[®]
Manufacturing Corp.
14741 West 106th Street
Lenexa, KS 66215 USA

(913) 888-0606
www.BMCcranes.com

Dimensions and values shown
are for reference purposes
only. Specifications subject
to change.



IC-20-K

SPECIFICATIONS

GENERAL

	ROTATION	ELEVATION	EXTENSION
Boom Movement	90°	0° to 75°	6-15' (1.8-4.6m)
Boom Speeds	10 sec.	9 sec.	25 sec.
Weight Total	6,380 lbs. (2,900 kg.)		
Travel Speed	0 to 5.5 mph (8.8km/h)		
Drawbar Pull	3,000 lbs. (1,360 kg.)		

ENGINE

	Kubota	Kubota
Make	Kubota	Kubota
Model	1.6L EFI (T4F)	1.8L D1803 (T4F)
Type	Dual Fuel	Diesel
Cylinder	4	3
Displacement	1.6L	1.8L
HP @ Gov. Speed	44HP (33 KW)	50HP (37 KW)
Fuel Tank Capacity	13.5 gal. (51L)	13.5 gal. (51L)

HYDROSTATIC PUMP

Piston type, direct driven from engine crankshaft.
Maximum flow 30 GPM (114 L/min).
Maximum pressure 3,000 psi (207 bar).

AXLES

FRONT
Contains planetary geared torque hubs and high torque hydraulic drive motors. Axle oscillates a total of 1-1/2" (38 mm).
REAR
Non-oscillating.

STEERING

Hydraulic steering unit controls cylinder attached to rear axle.

BRAKES

Primary braking from hydrostatic transmission. Foot-actuated disc brakes for additional braking. Spring applied hydraulic released park brake, actuated from a toggle switch on operator's control panel. All braking is on front wheels.

TIRES

FRONT
7.5 x 10 pneumatic, 16-ply, 145 PSI (1000k Pa)
REAR
7.5 x 10 pneumatic, 16-ply, 145 PSI (1000k Pa)

CHASSIS

CARGO DECK

19 sq. ft. (1.77 m²) of deck area. 5,000 lb (2,270 kg) capacity.

OUTRIGGERS

Three hydraulic outriggers of box-beam construction. Independent controls for each. Hydraulic cylinders are equipped with direct-connected holding valves.

LIFTING SLING BRACKETS

Includes two lift rings in front deck and lug on turntable for attaching lifting sling cables. Cables not included.

PULLING EYE

Mounted on front bumper.

OPERATOR COMPARTMENT

Provides one-position access to all chassis & crane functions. Includes fire extinguisher & bubble level.

ELECTRICAL (12-VOLT SYSTEM)

LIGHTING PACKAGE

One pair headlights and taillight.

DISPLAY

Lighted fuel, voltmeter, oil pressure, and water temperature gauges, hydraulic oil temperature gauge and hourmeter.

BACK-UP ALARM

Provides pulsating sound from 97dB alarm when transmission is in reverse.

OUTRIGGER ALARM SYSTEM

Pulsating alarm is activated when outriggers are being activated.

HYDRAULIC

TANDEM PUMP mounted to rear of hydrostatic piston pump. Delivers 6 GPM (23 L/min) at 2,500 PSI (172 bar) for boom circuits and 16 GPM (98.5 L/min) at 2,500 PSI (172 bar) for hoist circuit. System protected by relief valves and two micron filters. Hydraulic oil reservoir has 9.5 gallon (36 L) capacity.

BOOM ASSEMBLY

THREE-SECTION BOOM ASSEMBLY equipped with bearing pads, double-acting hydraulic cylinders extends boom. The primary extension cylinder and the double-acting boom elevation cylinder are equipped with direct connected holding valves. Boom angle indicator on left side of boom.

BOOM ROTATION

Two double-acting hydraulic cylinders connected to turntable torque tube provides 90° rotation. Heavy-duty ball bearing supports boom.

ANTI-TWO-BLOCK DEVICE

Prevents damage to hoist rope and/or crane components from pulling load hook against tip.

SHEAVE BLOCK, TWO-PART

Single sheave block for 2-part line requirements.