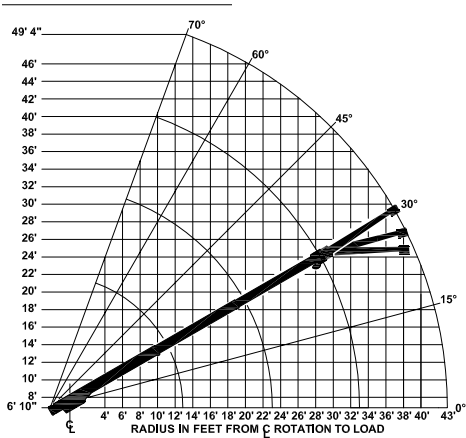


# BMC<sup>®</sup> BRODERSON<sup>®</sup> Manufacturing Corp.

## Load Chart US Standard

# IC-100-A Industrial Crane

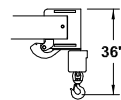


CAPACITIES APPLY TO OPERATION ON FIRM LEVEL SURFACE					
LOAD RADIUS FEET	MAIN BOOM OR EXTENSION CAPACITIES IN POUNDS				
	360° ROTATION		OVER FRONT		
	ON RUBBER	ON OUTRIGGERS	ON RUBBER	ON OUTRIGGERS	
<b>MAIN BOOM</b>	5	9400	17000	11200	20000
	6	8000	14800	9900	15600
	8	6000	11200	7900	11200
	10	4500	8700	6600	8700
	12	3400	6900	5300	6900
	14	2700	5900	4100	5900
	16	2100	5100	3200	5100
	18	1700	4400	2600	4500
	20	1400	3700	2200	4000
	22	1100	3100	1900	3500
	24	1000	2700	1600	3200
	26	800	2500	1400	2900
	30	600	2000	1100	2400
	33	500	1700	1000	1900
<b>10' BOOM EXT.</b>	34	400	1600	800	1900
	36	300	1400	700	1800
	38	200	1300	600	1700
	40	200	1100	600	1600
	43	---	900	500	1500
	BOOM	<b>10-FOOT BOOM EXTENSION - STRAIGHT OR OFFSET</b>			
	EXTENSION	<b>MAIN BOOM ANGLE</b>			
ANGLE	<b>0°</b>	<b>30°</b>	<b>45°</b>	<b>60°</b>	<b>70°</b>
*† 0°	2250	2600	3200	5000	7000
†15°	---	2400	2700	3500	4200
†30°	---	2250	2500	3000	3300

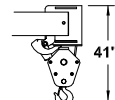
\* USE 0° FOR STRAIGHT BOOM EXTENSION. † USE 0°, 15° OR 30° FOR OFFSET BOOM EXTENSION.

LOAD RADIUS IS THE HORIZONTAL DISTANCE FROM THE CENTER OF ROTATION OF THE UNLOADED CRANE TO THE VERTICAL LOAD LINE WITH THE LOAD APPLIED.

EXCEEDING CAPACITY RATINGS OR APPLYING SIDE LOADS TO THE BOOM OR BOOM EXTENSION IS MISUSE, IS HAZARDOUS, AND VOIDS WARRANTY.



USE SINGLE-PART LOAD LINE FOR LOADS TO 10000 LBS. (WT. 90 LBS.)



USE TWO-PART LOAD LINE FOR LOADS TO 20000 LBS. (WT. 124 LBS.)

LOAD RADIUS IS THE HORIZONTAL DISTANCE FROM THE CENTER OF ROTATION OF THE UNLOADED CRANE TO THE VERTICAL LOAD LINE WITH THE LOAD APPLIED.

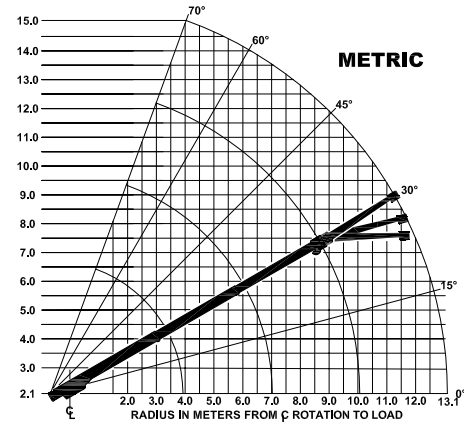
EXCEEDING CAPACITY RATINGS OR APPLYING SIDE LOADS TO THE BOOM OR BOOM EXTENSION IS MISUSE, HAZARDOUS, AND VOIDS WARRANTY.

**CAUTION:** BOOM EXTENSION LOADS MUST NOT EXCEED MAIN BOOM CAPACITY. BOOM EXTENSIONS CAN BE USED ON RUBBER WHEN CRANE IS STATIONARY. DO NOT PICK AND CARRY WITH BOOM EXTENSION DEPLOYED.

CAPACITIES ON OUTRIGGERS ARE 85% OF TIPPING LOADS. CAPACITIES ON RUBBER ARE 75% OF TIPPING LOADS. CAPACITIES ON IN & DOWN OUTRIGGERS ARE LESS THAN 85% OF TIPPING LOADS. CAPACITIES BELOW BOLD LINE ARE LIMITED BY TIPPING. OTHER CAPACITIES ARE LIMITED BY STRUCTURAL OR HYDRAULIC

## Load Chart Metric

# IC-100-A Industrial Crane

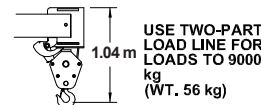
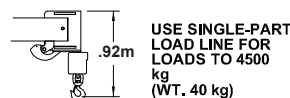


CAPACITIES APPLY TO OPERATION ON FIRM LEVEL SURFACE						
LOAD RADIUS METERS	MAIN BOOM OR EXTENSION CAPACITIES IN KILOGRAMS					
	360° ROTATION		OVER FRONT			
	ON RUBBER	ON OUTRIGGERS	ON RUBBER	ON OUTRIGGERS		
<b>MAIN BOOM</b>	1.5	4200	7700	5100	9000	
	2.0	3300	6200	4200	6400	
	2.5	2600	4900	3500	4900	
	3.0	2100	4000	3000	4000	
	3.5	1600	3300	2500	3300	
	4.0	1300	2800	2100	2800	
	5.0	900	2200	1400	2200	
	5.5	700	2000	1200	2000	
	6.0	600	1700	1000	1800	
	7.0	400	1300	800	1500	
	7.5	400	1200	700	1400	
	8.0	300	1100	600	1300	
	9.0	300	900	500	1100	
10.1	200	700	400	800		
<b>3 m BOOM EXT.</b>	10.5	100	700	300	800	
	11.0	100	600	300	800	
	11.5	100	600	200	700	
	12.0	---	500	200	700	
	13.1	---	400	200	700	
<b>3 m BOOM EXT.</b>	<b>BOOM EXTENSION</b>					
	<b>3 METER BOOM EXTENSION - STRAIGHT OR OFFSET</b>					
	<b>MAIN BOOM ANGLE</b>					
	ANGLE	0°	30°	45°	60°	70°
	*† 0°	1000	1200	1400	2200	3200
†15°	---	1100	1200	1600	1900	
†30°	---	1000	1100	1300	1500	

\* USE 0° FOR STRAIGHT BOOM EXTENSION. † USE 0°, 15° OR 30° FOR OFFSET BOOM EXTENSION.

LOAD RADIUS IS THE HORIZONTAL DISTANCE FROM THE CENTER OF ROTATION OF THE UNLOADED CRANE TO THE VERTICAL LOAD LINE WITH THE LOAD APPLIED.

EXCEEDING CAPACITY RATINGS OR APPLYING SIDE LOADS TO THE BOOM OR BOOM EXTENSION IS MISUSE, IS HAZARDOUS, AND VOIDS WARRANTY.



LOAD RADIUS IS THE HORIZONTAL DISTANCE FROM THE CENTER OF ROTATION OF THE UNLOADED CRANE TO THE VERTICAL LOAD LINE WITH THE LOAD APPLIED.

EXCEEDING CAPACITY RATINGS OR APPLYING SIDE LOADS TO THE BOOM OR BOOM EXTENSION IS MISUSE, HAZARDOUS, AND VOIDS WARRANTY.

**CAUTION:** BOOM EXTENSION LOADS MUST NOT EXCEED MAIN BOOM CAPACITY. BOOM EXTENSIONS CAN BE USED ON RUBBER WHEN CRANE IS STATIONARY. DO NOT PICK AND CARRY WITH BOOM EXTENSION DEPLOYED.

CAPACITIES ON OUTRIGGERS ARE 85% OF TIPPING LOADS. CAPACITIES ON RUBBER ARE 75% OF TIPPING LOADS. CAPACITIES ON IN & DOWN OUTRIGGERS ARE LESS THAN 85% OF TIPPING LOADS. CAPACITIES BELOW BOLD LINE ARE LIMITED BY TIPPING. OTHER CAPACITIES ARE LIMITED BY STRUCTURAL OR HYDRAULIC